

# Passive column loudspeaker **Ray-On 100**

Ray-On

Ray-On 100 is a 1m high column loudspeaker that should be mounted vertically. Its acoustical performances are very close to DSP loudspeakers ones thanks to the DGRC principle. It offers a high quality sound for large places such as conference rooms, airports, train stations, churches, shopping malls, amusement parks, etc.

Ray-On 100 was designed for sound reinforcement of speech and background music. An easy and fast set up, without a PC, simply by wiring the column and its amplifier makes its installation simple, efficient and safe.

Exists in 2 versions, low impedance and 100V.

Ray-On 100 is, since July 2013, certified EN54-24 type B.

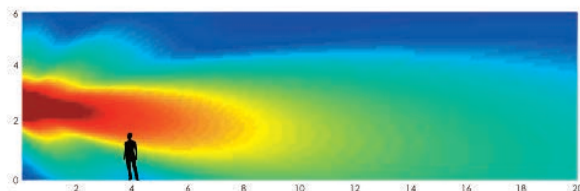


- Listening comfort
- Certified EN54-24
- Vertical mounting
- Perfect intelligibility

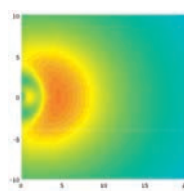


**EN54-24**  
TYPE B

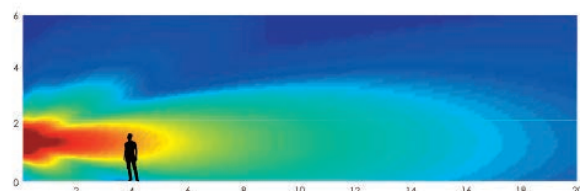
## Acoustical data



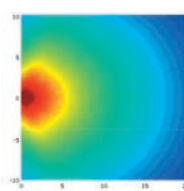
Sound coverage, **Ray-On100**, DGRC column



horizontal view



Sound coverage, standard 1m column



horizontal view



Ray-On - Datasheet  
Passive column loudspeaker

**Active**  
audio  
L'acoustique active

[www.activeaudio.fr](http://www.activeaudio.fr)  
[info@activeaudio.fr](mailto:info@activeaudio.fr)

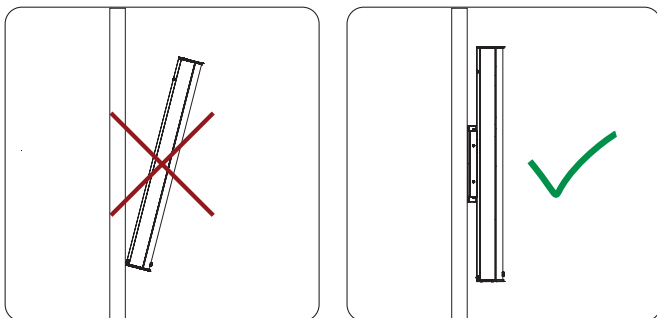
Tel +33 (0)2 40 46 66 64

# Passive column loudspeaker **Ray-On 100**

Ray-On

## Mounting

### Vertical mounting



The rigging system allows the column to stick very close to the wall, giving the impression that the column is part of the structure.

Acoustical data	Low impedance	100V
Power (according EN54-24)	150W continuous / 1000W peak	25W / 50W / 100W
SPL max at 8m	93dB	85 / 88 / 91 dB
SPL max equivalent 1m	111dB	103 / 106 / 109 dB
Amplifier power recommended	300W	-
Sensitivity 1W/8m (equivalent 1W / 1m)	71dB at 1W/8m (89dB/1W/1m)	
Frequency response at -3dB / -10dB	150Hz - 16,5kHz / 120Hz - 19kHz	
Vertical directivity	Wavefront synthesis	
Range (500Hz - 2kHz +/- 3dB)	15m	
Range (500Hz - 2kHz +/- 5dB)	22m	
Horizontal opening angle 1kHz / 4kHz	+/- 100° / +/- 70°	
Loudspeakers	12 loudspeakers 70x70mm outdoor	

Electrical data	Low impedance	100V
Nominal impedance	8Ohms	400 / 200 / 100 Ohms
Loudspeaker connector	Ceramic terminal block screw, with «loop-through»	
Wire section	From 0,5 to 2,5 mm <sup>2</sup>	
Protection	Thermal fuse and protection against overload	

Mechanical data	Low impedance	100V
Weight (kg)	9	10
Dimensions (mm)	128 (W) x 117 (D) x 1026 (H)	
Materials	Aluminum treated steel grid rustproof and UVproof	
Environment	IP54, from -25°C to 55°C	
Color	Black (RAL9005) ; White (RAL9016 repaintable)	
Mounting	Flush mounting	

Tuning and exploitation	Low impedance	100V
Recommended equalization	7 parametric cells	
Modeling	EASE and CATT-Acoustic models available	

Ray-On - Datasheet  
Passive column loudspeaker