



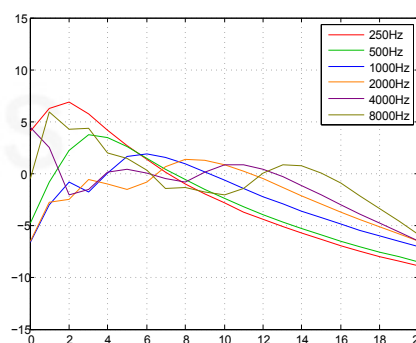
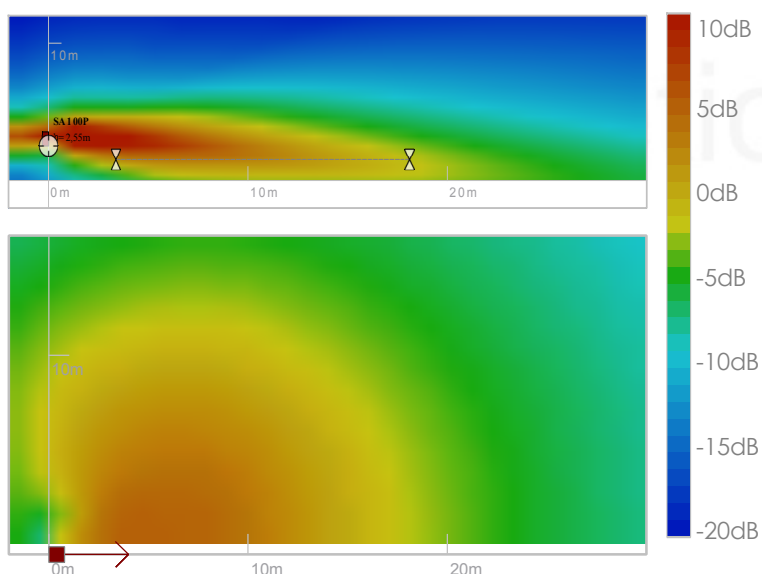
ACOUSTICAL DATA	
Angle of audience	0-5°
Range (500Hz-2kHz ± 3 dB)	15 m
Range (500Hz-2kHz ± 5 dB)	21 m
Max SPL (CEI268-16 noise)	95 dB SPL at 10m with MPA6150 amplifier
Frequency bandwidth (-10dB)	110Hz-19kHz
Horizontal opening angle (-6dB 1kHz-2kHz)	180°
Loudspeaker	3", neodymium, moulded frame

ELECTRICAL DATA	
Loudspeaker connector	Supplied 12 pins, through cable-gland
Microphone connector (option)	Male XLR, through cable gland
Recommended cabling length	Up to 300m with 4G1.5mm ² cable Up to 500m with 4G2.5mm ² cable
Impedance	3 channels, 8 Ω

MECHANICAL DATA	
Materials	Steel and PVC
Dimensions (mm)	1024 x 124 x 131
Weight (kg)	9
Environnement	0-40°C. IP55
Colors	Standard colors: Black (RAL 9005), White (RAL 9016) Option COL: any RAL

MOUNTING	
Flush mounting	Supplied square brackets

TUNING AND EXPLOITATION	
Software	Supplied SAdrive software
Modeling	EASE and CATT-Acoustic models available



Abcissa: distance (m).
Column SA100P at 2,55m from ground.
0 dB is the mean SPL over 3m-12m on axis.