



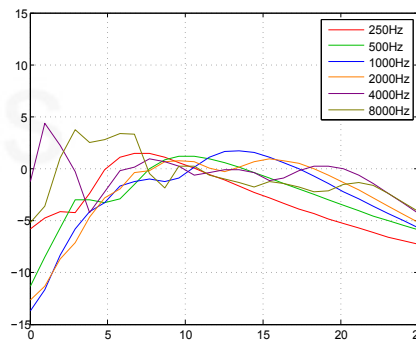
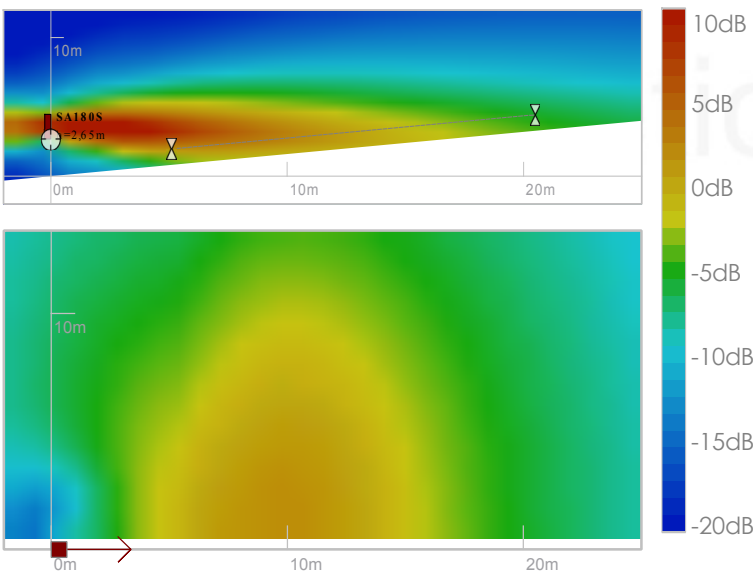
ACOUSTICAL DATA	
Angle of audience	5-20°
Range (500Hz-2kHz $\pm$ 3 dB)	22 m
Range (500Hz-2kHz $\pm$ 5 dB)	29 m
Max SPL (CEI268-16 noise)	95 dB SPL at 15m with MPA6150 amplifier
Frequency bandwidth (-10dB)	110Hz-19kHz
Horizontal opening angle (-6dB 1kHz-2kHz)	180°
Loudspeaker	3", neodymium, moulded frame

ELECTRICAL DATA	
Loudspeaker connector	Supplied 12 pins, through cable-gland
Microphone connector (option)	Male XLR, through cable gland
Recommended cabling length	Up to 300m with 4G1.5mm <sup>2</sup> cable Up to 500m with 4G2.5mm <sup>2</sup> cable
Impedance	3 channels, 8 $\Omega$

MECHANICAL DATA	
Materials	Steel and PVC
Dimensions (mm)	1840 x 124 x 135
Weight (kg)	17
Environnement	0-40°C. IP55
Colors	Standard colors: Black (RAL 9005), White (RAL 9016) Option COL: any RAL

MOUNTING	
Flush mounting	Supplied square brackets

TUNING AND EXPLOITATION	
Software	Supplied SAdrive software
Modeling	EASE and CATT-Acoustic models available



Abscissa: distance (m).  
Column SA180S at 2,55m from ground.  
0 dB is the mean SPL over 6m-25m on axis.