

## Link innovations 1998

### Ground first connection

The 7 central contacts position allows first connection of the ground.



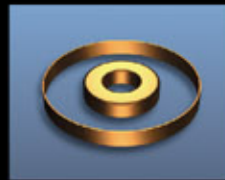
### Retaining Spring on Female Pins to enlarge contact area

Military standard pins featuring contact retaining spring on female contacts, to enlarge contact area.



### Dual ground rings

To buss together the 6 ground contacts.



### Silk-Screened insert for easy identification during assembly



2000

### Robust Skintops

are available for Pg29 and Pg36 configurations. An optional weaved strain relief and a Pg42 Skintop are also available for additional support.

### Serviceable Plastic Insulating Sleeve

can easily be installed or removed after terminations are completed while still providing a dependable insulator between the connector housing and internal conductors.

### UL-CSA

The highest UL-CSA Rating obtained with a rubber insert:

UL Recognized for 25 amps of continuous current (16A CNR)

The exclusive rubber silk-screened insert provides for easy and secure pin insertion while maintaining the highest continuous current ratings.

The gold plated contacts with steel springs ensure reliable mating every time.

*Proudly First*



### Ultra Compact Spider Grip

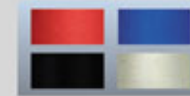
is the only connector available that maintains the width of the Pg29 configuration guarantees secure fan out terminations with a durable strain relief.



### Durable Backshell

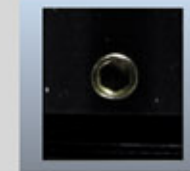
The black powder coated version is available in two lengths for ultimate serviceability.

An anodized aluminium version in multiple colours is also available.



### Integral Locking Set Screw

with a captive helicoidal retention system guarantees connector integrity in the harshest touring applications.



### Impact resistant rubberized locking rings

are impact resistant for extended durability and offered in multiple colours for easy identification



## more Link innovations 2005

2001

- IP 67 Waterproof rating.
- Full Compatibility with all industry standard 19 pin lighting connectors.
- Used Globally in touring and fixed production environments.

### NORMAL BACK-SHELL

	Standard Version	Rubberized Locking Ring	Set Screw	Rubberized Locking Ring Set Screw
LKS 19 Pin solder panel female	LKS D PFS B			
LKS 19 Pin crimp panel female	LKS D PFC B			
LKS 19 Pin solder panel male	LKS D PMS PA B	LKS D PMS RA B		
LKS 19 Pin crimp panel male	LKS D PMC PA B	LKS D PMC RA B		
LKS 19 Pin PG29 solder cable female	LKS D LFS M29 B 1		LKS D LFS M29X B 1	
LKS 19 Pin PG29 crimp cable female	LKS D LFC M29 B 1		LKS D LFC M29X B 1	
LKS 19 Pin PG36 solder cable female	LKS D LFS M36 B 2		LKS D LFS M36X B 2	
LKS 19 Pin PG36 crimp cable female	LKS D LFC M36 B 2		LKS D LFC M36X B 2	
LKS 19 Pin PG29 solder cable male	LKS D LMS PA M29 B 1	LKS D LMS RA M29 A 1	LKS D LMS PA M29X B 1	LKS D LMS RA M29X B 1
LKS 19 Pin PG29 crimp cable male	LKS D LMC PA M29 B 1	LKS D LMC RA M29 A 1	LKS D LMC PA M29X B 1	LKS D LMC RA M29X B 1
LKS 19 Pin PG36 solder cable male	LKS D LMS PA M36 B 2	LKS D LMC RA M36 A 2	LKS D LMS PA M36X B 2	LKS D LMS RA M36X B 2
LKS 19 Pin PG36 crimp cable male	LKS D LMC PA M36 B 2	LKS D LMS RA M36 A 2	LKS D LMC PA M36X B 2	LKS D LMC RA M36X B 2

### LONG BACK-SHELL

	Standard Version	Rubberized Locking Ring	Set Screw	Rubberized Locking Ring Set Screw
LKS 19 Pin solder panel female				
LKS 19 Pin crimp panel female				
LKS 19 Pin solder panel male				
LKS 19 Pin crimp panel male				
LKS 19 Pin PG29 solder cable female	LKS D LFS L29 B 1		LKS D LFS L29X B 1	
LKS 19 Pin PG29 crimp cable female	LKS D LFC L29 B 1		LKS D LFC L29X B 1	
LKS 19 Pin PG36 solder cable female	LKS D LFS L36 B 2		LKS D LFS L36X B 2	
LKS 19 Pin PG36 crimp cable female	LKS D LFC L36 B 2		LKS D LFC L36X B 2	
LKS 19 Pin PG29 solder cable male	LKS D LMS PA L29 B 1	LKS D LMS RA L29 A 1	LKS D LMS PA L29X B 1	LKS D LMS RA L29X B 1
LKS 19 Pin PG29 crimp cable male	LKS D LMC PA L29 B 1	LKS D LMC RA L29 A 1	LKS D LMC PA L29X B 1	LKS D LMC RA L29X B 1
LKS 19 Pin PG36 solder cable male	LKS D LMS PA L36 B 2	LKS D LMC RA L36 A 2	LKS D LMS PA L36X B 2	LKS D LMS RA L36X B 2
LKS 19 Pin PG36 crimp cable male	LKS D LMC PA L36 B 2	LKS D LMS RA L36 A 2	LKS D LMC PA L36X B 2	LKS D LMC RA L36X B 2

### NORMAL BACK-SHELL

	Standard Version	Rubberized Locking Ring	Set Screw	Rubberized Locking Ring Set Screw
LKS 19 Pin solder panel female	LKS M PFS A			
LKS 19 Pin crimp panel female	LKS M PFC A			
LKS 19 Pin solder panel male	LKS M PMS A A	LKS M PMS RA A		
LKS 19 Pin crimp panel male	LKS M PMC A A	LKS M PMC RA A		
LKS 19 Pin PG29 solder cable female	LKS M LFS M29 A 1		LKS M LFS M29X A 1	
LKS 19 Pin PG29 crimp cable female	LKS M LFC M29 A 1		LKS M LFC M29X A 1	
LKS 19 Pin PG36 solder cable female	LKS M LFS M36 A 2		LKS M LFS M36X A 2	
LKS 19 Pin PG36 crimp cable female	LKS M LFC M36 A 2		LKS M LFC M36X A 2	
LKS 19 Pin PG29 solder cable male	LKS M LMS A M29 A 1	LKS M LMS RA M29 A 1	LKS M LMS PA M29X A 1	LKS M LMS RA M29X A 1
LKS 19 Pin PG29 crimp cable male	LKS M LMC A M29 A 1	LKS M LMC RA M29 A 1	LKS M LMC PA M29X A 1	LKS M LMC RA M29X A 1
LKS 19 Pin PG36 solder cable male	LKS M LMS A M36 A 2	LKS M LMC RA M36 A 2	LKS M LMS PA M36X A 2	LKS M LMS RA M36X A 2
LKS 19 Pin PG36 crimp cable male	LKS M LMC A M36 A 2	LKS M LMS RA M36 A 2	LKS M LMC PA M36X A 2	LKS M LMC RA M36X A 2

### LONG BACK-SHELL

	Standard Version	Rubberized Locking Ring	Set Screw	Rubberized Locking Ring Set Screw
LKS 19 Pin solder panel female				
LKS 19 Pin crimp panel female				
LKS 19 Pin solder panel male				
LKS 19 Pin crimp panel male				
LKS 19 Pin PG29 solder cable female	LKS M LFS L29 A 1		LKS M LFS L29X A 1	
LKS 19 Pin PG29 crimp cable female	LKS M LFC L29 A 1		LKS M LFC L29X A 1	
LKS 19 Pin PG36 solder cable female	LKS M LFS L36 A 2		LKS M LFS L36X A 2	
LKS 19 Pin PG36 crimp cable female	LKS M LFC L36 A 2		LKS M LFC L36X A 2	
LKS 19 Pin PG29 solder cable male	LKS M LMS PA L29 A 1	LKS M LMS RA L29 A 1	LKS M LMS PA L29X A 1	LKS M LMS RA L29X A 1
LKS 19 Pin PG29 crimp cable male	LKS M LMC PA L29 A 1	LKS M LMC RA L29 A 1	LKS M LMC PA L29X A 1	LKS M LMC RA L29X A 1
LKS 19 Pin PG36 solder cable male	LKS M LMS PA L36 A 2	LKS M LMC RA L36 A 2	LKS M LMS PA L36X A 2	LKS M LMS RA L36X A 2
LKS 19 Pin PG36 crimp cable male	LKS M LMC PA L36 A 2	LKS M LMS RA L36 A 2	LKS M LMC PA L36X A 2	LKS M LMC RA L36X A 2

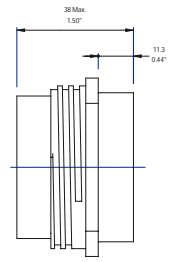
### LKS BREAK IN/OUT CONNECTORS (SPIDER)

		Only Connector	Connector wired w/ 1.5 mt of cable each circuit
LKS 19 Pin cable male Break out	version for six cables by 3x1,5 mm <sup>2</sup>	LKS D LMS RA MS B S1	LKS 19 MC 1SPD
LKS 19 Pin cable female Break in	version for six cables by 3x1,5 mm <sup>2</sup>	LKS D LFS MS B S1	LKS 19 FC 1SPD
LKS 19 Pin cable male Break out	version for six cables by 3x2,5 mm <sup>2</sup>	LKS D LMS RA MS B S2	LKS 19 MC 2SPD
LKS 19 Pin cable female Break in	version for six cables by 3x2,5 mm <sup>2</sup>	LKS D LFS MS B S2	LKS 19 FC 2SPD

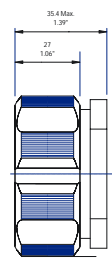
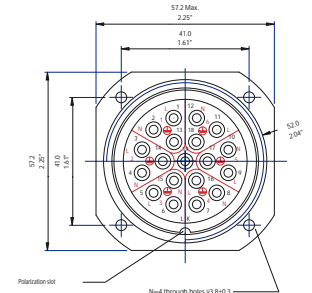
### TECHNICAL DATA

Voltage Rating	600 V
Current Rating	25 A (16 A CNR)
Dielectric strenght	(sea level) 2000 V a.c. (test/ 1 min.)
Operating temperature	-55 +125 °C (+90 °C USR/CNR)
Insert	Advance Elastomer
Contacts	Copper alloy -gold plated
Protection Grade	IP67 (when mated)
Wire range	1.5 - 4.0 mmq (12 - 16 AWG)

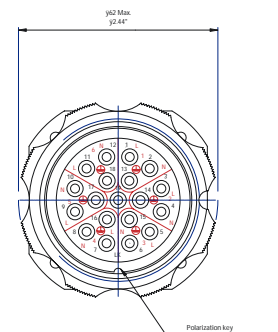
### PANEL MOUNT DIMENSIONS



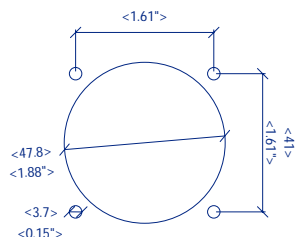
### FEMALE



### MALE



### PANEL CUT OUT



Link srl

00155 Rome - Italy - Via di Tor Cervara, 173  
tel +39 06227251 - Fax +39 0622725225 - www.linkitaly.com

Link USA, Inc.

1020 Bunnell Road - Altamonte Springs, FL 32714 - USA  
tel +1 4077740088 - Fax +1 4078655786

